



# OCTG Solutions for Geothermal Frontiers

Geothermal Well Construction Products

Manufacturing Services



# The geothermal advantage

In the challenging environment of geothermal energy extraction, connection reliability, agility and performance are paramount.

## Connection Technology

We are a world leader in developing premium connection solutions to meet the ever-increasing demands of the world's energy industry.

## OCTG

Hunting has the technology, resources, established mill relationships and experience to supply tubular needs on time, anywhere in the world.

## Our OCTG premium connections deliver unparalleled benefits:

### Reliability

Our OCTG connections are validated and manufactured to the highest industry and quality standards.

### Performance

Designed to perform, our OCTG connections withstand geothermal well conditions, including high compressive loads and temperatures up to 350°C.

### Agility

Hunting is a leading manufacturing technology company, agile in customising solutions to meet your unique geothermal needs.





# Elevate your geothermal operations with Hunting's OCTG Connection Technology

## Unleashing geothermal energy

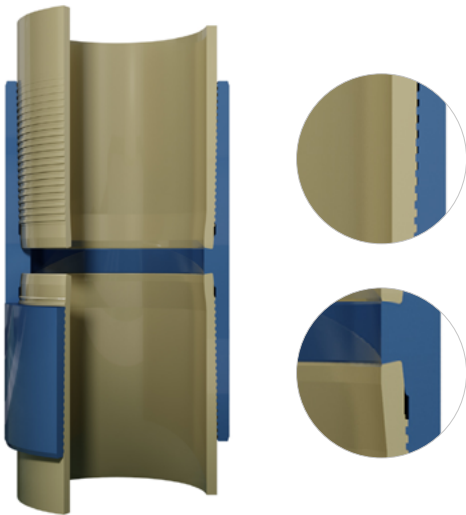
Harness the power of geothermal energy with our advanced OCTG & Premium Connection solutions, engineered to meet the demands of geothermal applications. Designed for high-temperature and corrosive environments, our solutions ensure optimal performance and extended well life.



# SEAL-LOCK® XD (SLXD)

SEAL-LOCK® XD is a proprietary hooked-style thread form that is highly suitable for extreme critical well applications where bending, pressures and compression forces are high.

Its undercut load flanks allow for strong structural integrity under extreme loads.



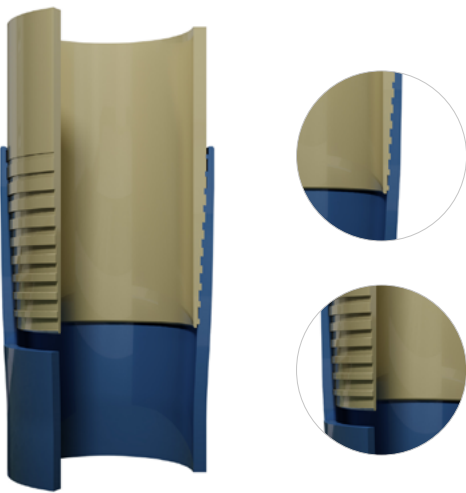
Key features	• Threaded and Coupled
	• Advanced anti-galling treatment
	• Gas sealability

Size range	2.375 - 14.000"
Material	Duplex Stainless Steel, Carbon Alloys Steel, Nickel Alloy, Titanium
Temperature rating	Up to 356°C

# TEC-LOCK Wedge (TLW)

With over 40 million feet of TEC-LOCK Wedge (TLW) sold for production applications in the U.S. shale market, this connection has proven its reliability and performance across some of the most demanding environments.

Its exceptional strength and versatility make it ideally suited for the extreme challenges faced in high-temperature geothermal projects, where robust materials and performance are critical.



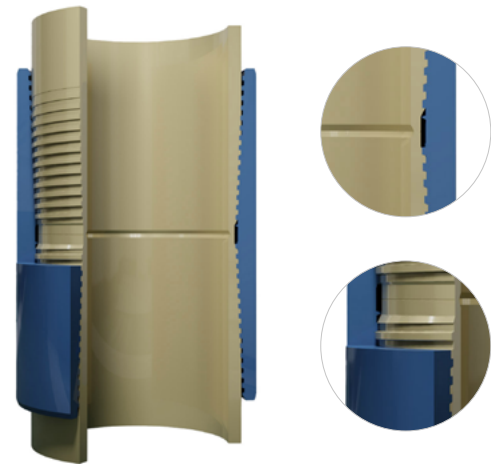
Key features	• Wedge-style thread form provides maximum compression performance
	• Optimised for high fatigue resistance

Size range	4.000 - 13.625"
Material	Duplex Stainless Steel, Nickel Alloy, Titanium
Temperature rating	Up to 356°C

# SEAL-LOCK® BOSS (SLBOSS)

SEAL-LOCK® BOSS is a threaded and coupled casing connection designed to be cost competitive with API Buttress.

SEAL-LOCK® BOSS utilises a patented hooked thread design for sealing and a unique pin-to-pin torque shoulder to provide enhanced compressive loading.



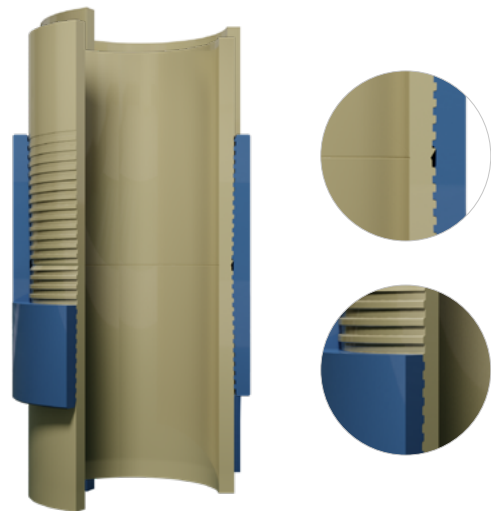
Key features	• Threaded and Coupled
	• Enhanced compressive and torsional resistance

Size range	7.625 - 20.000"
Material	Carbon Alloy Steel, Duplex Stainless Steel, Nickel Alloy
Temperature rating	Up to 356°C

# TEC-LOCK BTC (TLBTC)

TEC-LOCK™ BTC connection system is a close-tolerance threadform with shouldering pin noses that eliminate the open “J” area.

It creates a flush ID for turbulent free flow and reduced tool hang ups. The pin-to-pin contact is excellent for rotating casing downhole and enhancing connection integrity. Ideal for extended reach horizontal applications requiring high bending, compressive and torsional resistance.



Key features	• Close Tolerance Threadform minimises connection stresses
	• Compatible with API BTC

Size range	4.500 – 13.375"
Material	Carbon Alloy Steel, Duplex Stainless Steel, Nickel Alloy
Temperature rating	Up to 356°C



## Get in touch

Enhance your geothermal projects with our state-of-the-art OCTG premium connections.

Contact us for expert consultation or to request a customised quote:

[energy\\_transition@hunting-intl.com](mailto:energy_transition@hunting-intl.com)

### **EMEA**

**Hunting Energy Services Intl.**  
Badentoy Avenue  
Badentoy Industrial Estate  
Portlethen, AB12 4YB  
United Kingdom

T. +44 (0) 1224 787000

### **Americas**

**Hunting Energy Services Inc.**  
16825 Northchase Drive, Suite 600  
Houston  
Texas 77060  
USA

T. 1 281 448 2200

### **Asia Pacific**

**Hunting Energy Services Pte Ltd.**  
16E Tuas Avenue 1 #01-61  
JTC Space @ Tuas  
639537  
Singapore

T. +65 693 31777