

HYPER-LOCK™ HELIX2 (HLH2)

Connection Technology | Threaded and Coupled

Features

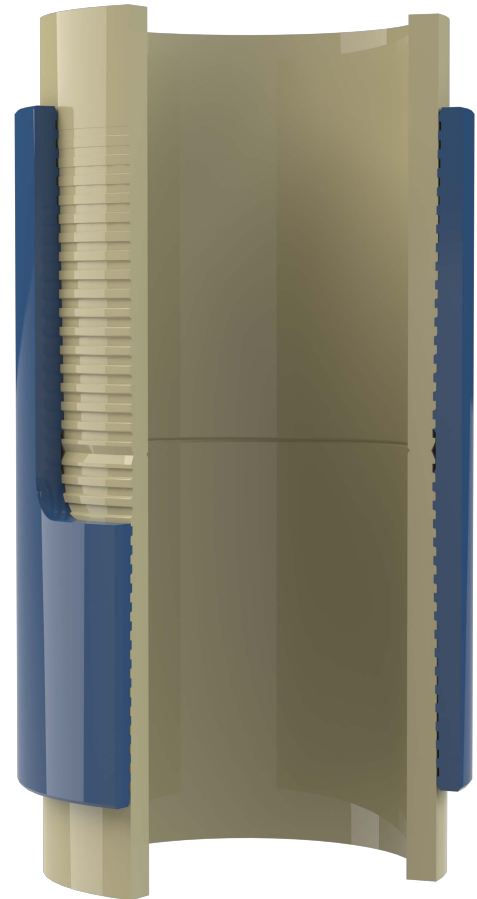
- Available in sizes from 4.500 in. to 7.625 in.
- Shallow thread form with negative load flanks provide sound structural integrity and trouble-free running.
- Pin-to-Pin torque shoulder area greater than semi-premium BTC connections resulting in higher torque performance.
- Dual thread start provides faster casing installations.
- Flush bore eliminates turbulence and tool hang ups

Benefits

- Run-Out Thread achieves 100% axial efficiencies.
- Thread design allows deep stab and quick make up (4 to 5 turns), reduced risk of cross thread
- Extensive worldwide support through Hunting mill relationships and threading locations
- Couplings are machined from standard API coupling stock

Built for onshore semi-premium applications, HYPER-LOCK™ HELIX2 is the powerhouse that delivers exceptional torque and faster running speeds—boosting performance, driving efficiency, and cutting operational costs where it counts

The pin-to-pin contact is excellent for rotating casing downhole and enhancing connection integrity. Ideal for extended reach horizontal applications requiring high bending, compressive and torsional resistance.



MORE PERFORMANCE. MORE POSSIBILITIES.