

ControlFire® Perf +



ControlFire Perf+ Panel

ControlFire+ Software

Perf+ Logger Software

ControlFire® Perf+ Panel

The ControlFire® Perf+ Panel from Hunting Titan conveniently integrates multiple surface systems into a single, compact package to simplify and automate your perforating operations.



Perf+ combines the shooting power supply, ControlFire surface panel and perforating data acquisition into a single 3.5" rack mount panel, significantly reducing the cost and footprint of perforating hardware in the wireline unit. Moreover, the Perf+ system features a software driven shooting power supply which provides automation capabilities during ControlFire operations to eliminate human error and expedite the perforating process. The Perf+ panel is compatible with both conventional pressure switches and ControlFire addressable switches and allows for either roll-up or push-button firing. Perforating "on the fly" is faster and easier than ever with the upgraded switch communication protocol and automatic firing mode. The ControlFire Perf+ Panel is compatible with existing acquisition systems, satisfies the recommendations set forth in API RP-67 and is currently undergoing CE certification.

Features

- Combines shooting panel, ControlFire panel and data acquisition
- Software controlled shooting power supply
- Upgraded ControlFire communication protocols
- Onboard CCL, Depth, line speed and line tension interfaces
- 3 Firing Modes

Benefits

- Reduces perforating hardware in WL unit
- Eliminates switch damage caused by manual over-current output
- 50% faster switch communication and reduced USB dropouts
- Acquires and processes depth, line speed, line tension, CCL and V/I data
- Automated firing capabilities reduces human error

ARM: Non-ControlFire operations such as +/- EBFire pressure switches and dual diodes

ARM CF: V2.0 ControlFire operations using manual Variac knob or push-button firing option

AUTO CF: Automated V3.0 ControlFire operations for hands free perforating

Perforating "on the fly" is faster and easier than ever!

Specifications

Part Numbers	
9002-021-100 (Coming Soon)	ControlFire Perf+ Panel including Perf+ Logger Software
9002-021-100-NOACQ	ControlFire Perf+ Panel only, Excludes Perf+ Logger acquisition (can be upgraded for a fee)
ENVIRONMENTAL	
Operating Temperature Range	14 to 131 °F (-10 to 55 °C)
ELECTRICAL	
AC Power Supply	90-264 VAC
Power Supply Frequency	50-60 Hz, Single Phase, 2-Wire Plus Ground
Voltage Output	35 to ±500 VDC (Filtered & Continuously Adjustable)
Current Output	0 to 2.0 A
Power Output	>600 W (±350 VDC @ 1.7 A with 150 ohm load)
Output Current Limit	2.0 A
Output Ripple (rms)	<2% @ ±300 VDC and 2 A
Output Noise (p-p)	<1% @ ±300 VDC and 2 A
GENERAL SPECIFICATION	
Dimensions	3.5 x 19 x 14 in. (8.9 x 48.3 x 35.6 cm)
Weight	28.8 lb (10.6 kg)
Mount	19 in. Rack with Slide Rails & Grab Handles
Certifications	CE Pending



Panel Backside Connections

Perf+ Logger Software

The Perf+ Logger Software from Hunting Titan provides the user with a modern and practical tool string interface for basic perforating data acquisition when utilizing the ControlFire Perf + Panel.

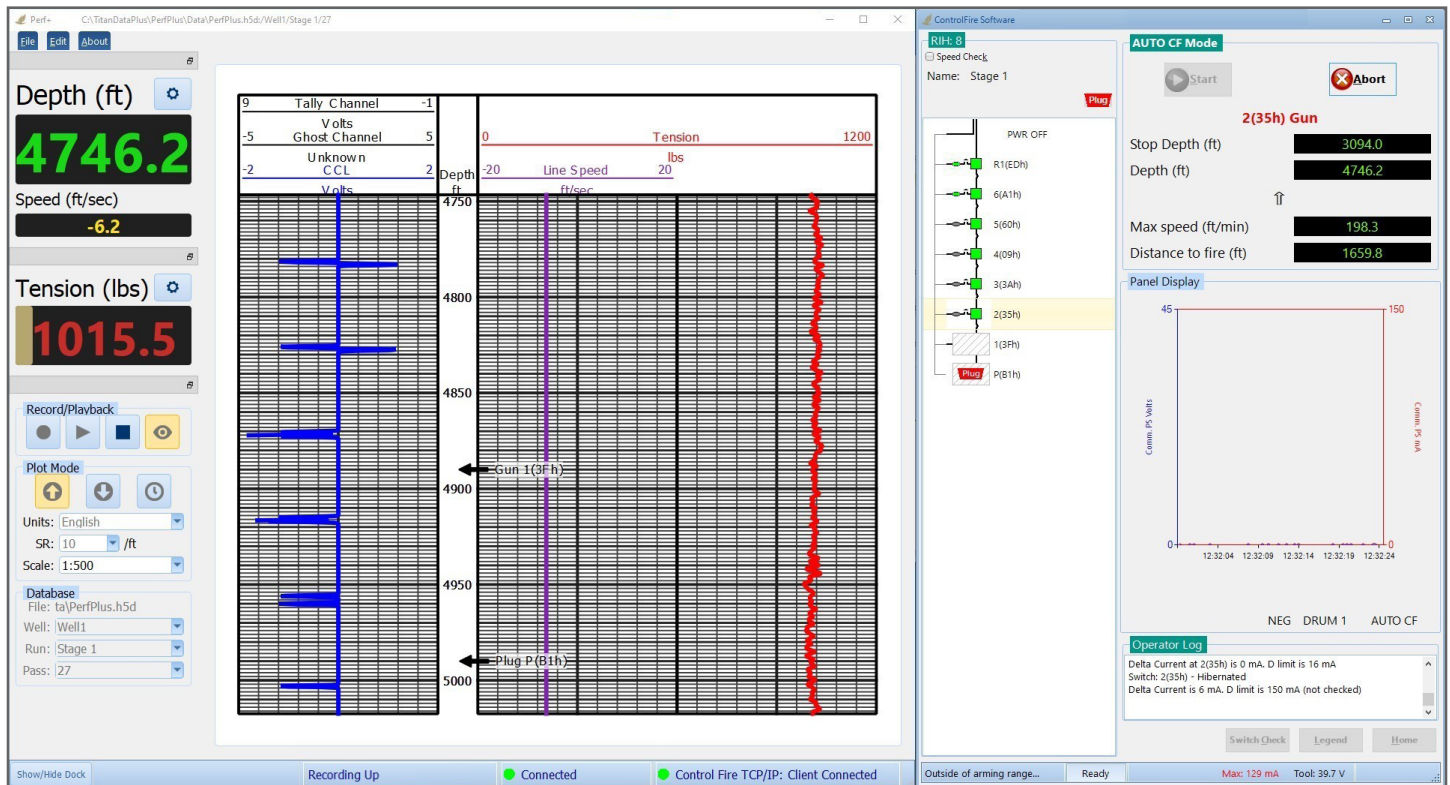
The Perf+ Logger Software and Perf+ Panel seamlessly interface with existing depth encoders and line speed/tension systems to generate a user-friendly log record with depth, line speed, surface line tension, CCL and V/I channels. This integrated system eliminates the need for outdated and expensive cased hole logging systems which are independent of the shooting power supply and complicate perforating operations. By incorporating the shooting panel and data processing into a single unit, the Perf+ software can automatically plot shot indications on the perforating log, providing real time perforation depth records required for simultaneous well data analytics. Additionally, the latest ControlFire+ software is specifically designed to provide optimal window sizing options for viewing both the switch controls and log on the same monitor. The Perf+ Logger Software is compatible with 64bit Windows 7 operating systems or later.

Features

- Perforating tool string interface compatible with ControlFire Perf+ Panel
- User friendly perforating log GUI independent of ControlFire software
- Compatible with existing depth encoders and line speed/tension systems
- Actual shot depth automatically logged in real time
- No annual software licenses

Benefits

- Eliminates cost and footprint associated with cased hole logging systems
- Optimal window viewing and sizing
- Perforating log with depth, line speed, line tension, CCL and V/I data channels
- Ideal for real time well data analytics
- No reoccurring or unexpected fees

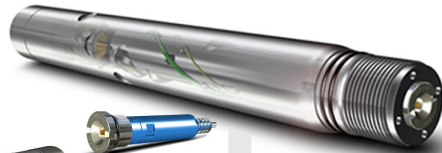


Perf+ Logger Software

ControlFire+ Software

Select-Fire Systems

Release Tool



VeriFire® Panel



PowerSet®



Perf+ Panel



ControlFire®
Proven. Reliable. Safe.
99.9995% Success rate in over 6 million runs + Zero safety incidents

Visit our website or contact your local Hunting Titan representative for more information on ControlFire switch products and compatible perforating systems.

Further Information

Web
www.hunting-intl.com

Email
sales.titan@hunting-intl.com
support.titan@hunting-intl.com

Global Headquarters

Hunting Energy Services Inc.
16825 Northchase Drive, Suite 600
Houston, Texas 77060-3236
USA
T. +1 281 442 7382

