



HDD PRODUCT CATALOG

More than just drill pipe

Table of Contents

03

DRILL PIPE

07

DRIVE CHUCKS
+ SAVER SUBS

11

QUICK CONNECTS
ADAPTERS +
COLLARS

15

TRANSMITTER
HOUSINGS

17

ROCK TOOLS

21

JAW BLOCKS

23

DRILL PIPE SPECIFICATIONS
+ DIMENSIONS

25

REFERENCE INFORMATION

Total Customer Satisfaction

At Hunting, we follow the strictest guidelines for quality control of raw materials from our heat-treating and upsetting process to machining at our Broussard, Louisiana facility. We also hold ourselves accountable by providing traceability with every piece of pipe or tooling that leaves our yard.

Our commitment to you is total customer satisfaction.



WHY HUNTING?



Global Dealer Network

Our worldwide dealer network knows what it takes to get the job done. Let us connect you with the professionals in your area.



#1 Product Guarantee Policy in HDD

We stand by our product. If you aren't satisfied with our quality, we will make it right. That's our guarantee—the best you'll find in the business.



Fast Delivery

We've partnered with the best on land, sea, and air to get you what you need when you need it at a price that makes sense. If we have it in our warehouse, it's out the door that same day.

American Augers®, Ditch Witch®, Subsite®, and Toro® are registered trademarks owned by the Toro Company, Bloomington, MN.

Astec® is a registered trademark of Astec Industries, Chattanooga, TN.

DigiTrak® is a registered trademark of Digital Control Incorporated, Renton, WA.

Prime Drilling® is a registered trademark of Prime Drilling GmbH, Wenden, Germany.

TT Technologies™ is a trademark of TT Technologies, Inc., Aurora, IL.

Underground Magnetics® is a registered trademark of Underground Magnetics, Johnston, IA.

Universal HDD® is a registered trademark of Universal Horizontal Directional Drilling, Lake Zurich, IL.

Vermeer® is a registered trademark of Vermeer Mfg., Pella, IA.

Vermeer® Drill Pipe

ONE PIECE FORGED

HIWS1 IS THE ORIGINAL – SINCE 1997

Forged in Fire, HIWS1 is the original, precision drill pipe. With its superior strength and ability to endure bending loads and wear, HIWS1 is unmatched when it comes to performance and thread life. Its quick make-up, break out and double shouldered design make it the premium drill pipe connection.

Features & Benefits

- Special I-145-grade alloy material
- Steep-tapered, deep-stabbing connection
- Fast-pitch thread for quick make up
- Internal and external upset to optimize strength and performance
- Double-shouldered design for added torque
- Conditioning of connections to assist thread compound adhesion
- Protectors applied to pin and box connections to prevent damage



Unmatched Quality

A job worth doing is a job worth doing well. Our team is committed to producing quality products to ensure that your job site is safe and successful. If you are unsatisfied with any of our products, we offer the best guarantee in the industry.



Constant Innovation

Our expert team is relentless about engineering ground-breaking tools, improving materials selection, creating a smoother sales process, and delivering more personalized and attentive customer service.



Custom Tooling

Whether your job requires a modification to a tool we have in our inventory, or you need us to develop an entirely new solution, we can make it happen.

Vermeer® Drill Pipe

FORGED

HIWS1 ONE-PIECE FORGED FOR VERMEER® DRILL RIGS

Part Number	Tube Diameter/Wall	Connection	Length	Drill Rig Model
HI216490	1.660" / .191	HIWS-200	5'	TT4X, DD65
HI216492	1.660" / .191	HIWS1-200	6'	D7x11, D8x12, D9x13, D9x13 S3, D10x15 S3
HI230993	1.900" / .240	HIWS1-250	10'	D16x20, D18x22, D20x22
HI221628	2.063" / .260	HIWS1-400	10'	D18x22, D20x22, D20x22 S3, D23x30 S3, D24x26
HI222276	2.375" / .254	HIWS1-600	10'	D23x30 S3, D24x40
HI296309599	2.375" / .295	HIWS1-650	10'	D36x50, D45x55
HI296312531	2.375" / .295	HIWS1-650	15'	D36x50
HI296309521	2.625" / .400	HIWS1-700	10'	D36x50, D40x55 S3
HI296309522	2.625" / .400	HIWS1-700	15'	D36x50, D40x55 S3
HI222451030	2.875" / .392	HIWS1-900	3M	D60x90, 18N, 20N
HI222452	2.875" / .392	HIWS1-900	15'	D50x100, D60x90, 18N, 20N
HI222454	3.500" / .449	HIWS1-800	15'	D50x100, D55x100, D60x90, D75x100, D80x100
HI296337977	3.500" / .476	HIWS1-1000	15'	D80x120, D100x120, D100x140
HI296309520	3.500" / .476	HIWS1-1000	20'	D80x120, D100x120, D100x140

HXT®

- 30% increase in torque
- Up to 44% increase in flow capacity
- Best choice for air hammers / mud motors

HXT® ONE-PIECE FORGED FOR VERMEER® DRILL RIGS

Part Number	Tube Diameter/Wall	Connection	Length	Drill Rig Model
HI281600	2.063" / .260	HXT-402	10'	D22x33, D24x33
HI294566	2.375" / .295	HXT-602	10'	D33x44, D36x50
HI284153	2.375" / .295	HXT-602	15'	D33x44, D36x50
HI294642	2.625" / .400	HXT-602	15'	D33x44, D36x50
HI276305	2.62" / .400	HXT-702	14.8"	JT4020 M1
HI276307	2.875" / .440	HXT-902	15'	D55x100, D75x100
HI350802015	3.5" / .449	HXT-802	15'	JT7020, JT8020, JT100
HI276376	3.500" / .449	HXT-802	20'	D80x120, D100x120
HI296100215	3.500" / .476	HXT-1002	15'	
HI296100220	3.500" / .476	HXT-1002	20'	

Ditch Witch® Drill Pipe

FORGED

DITCH WITCH® THREAD ONE-PIECE FORGED

Part Number	Tube Diameter/Wall	Connection	Length	Drill Rig Model
355-1149	1.650" / .190	1.30-5	6'	JT9, JT10
355-1005	1.819" / .244"	1.47-4	10'	JT1220
355-1106	2.060" / .295	1.94-4	10'	JT20, JT2020
355-1312	2.252" / .276"	1.76-4	10'	JT24
355-1244	2.375" / .300	2.11-4	9.8'	JT25, JT28, JT30, JT3020, JT2720M1
359-1211	2.835" / .313	2.10-4	15'	JT40
400-847	2.811" / .311"	2.59-4	14.75'	JT4020M1
355-1079	3.059" / .346"	2.46-4	15'	JT60
355-1200	3.500" / .394	3.27-4	14.75'	JT100

HIWS1 THREAD ONE-PIECE FORGED FOR DITCH WITCH® DRILL RIGS

Part Number	Tube Diameter/Wall	Connection	Length	Drill Rig Model
HI216490	1.660" / .191	HIWS1-200	5'	JT5, JT520
HI216492	1.660" / .191	HIWS1-200	6'	JT9, JT922, JT10
HI230993	1.900" / .240	HIWS1-250	10'	JT1220
HI221628	2.063" / .260	HIWS1-400	10'	JT1220, JT20, JT2020
HI222276	2.375" / .254	HIWS1-600	10'	JT20, JT2020, JT25, JT2720M1, JT30, JT3020
HI296309522	2.625" / .400	HIWS1-700	15'	JT40
HI222452	2.875" / .392	HIWS1-900	15'	JT60

HXT®

HXT® ONE-PIECE FORGED FOR DITCH WITCH® DRILL RIGS

Part Number	Tube Diameter/Wall	Connection	Length	Drill Rig Model
HI281600	2.063" / .260	HXT-402	10'	JT2020
HI294566	2.375" / .295	HXT-602	10'	JT25, JT30, JT2720M1, JT3020
HI276305	2.625" / .400	HXT-702	14.75'	JT4020M1
HI350802015	3.500" / .449	HXT-802	15'	JT7020, JT8020, JT100

- 30% increase in torque
- Up to 44% increase in flow capacity
- Best choice for air hammers

Ditch Witch® Drill Pipe

AT PIPE

DIRECT REPLACEMENT DRILL STEM FOR DITCH WITCH® AT DRILLS

Part Number	Tube Diameter/Wall	Connection	Length	Drill Rig Model
355-1351	2.374" / .276	2.77-4	9.3'	AT30 (Spacer not included)
355-1338	2.910" / .276	2.77-4	9.3'	AT30 Flush (Spacer not included)
355-1258-500	3.630" / .313	3.25-4	14.3'	AT60, AT4020M1
355-1050-500	3.630" / .313	3.44-4	14.1'	AT100

- Spacer for inner rod on AT30 drill stem must be supplied by OEM or reuse from existing pipe.

Advantage

THE HIGH QUALITY, LOW COST ALTERNATIVE

Low-cost doesn't mean low quality. Our Advantage inertia-welded drill rod has been thoroughly tested and meets all of the tolerances and quality standards set by Hunting at a very competitive price.

HIWS1 ADVANTAGE SERIES

Part Number	Tube Diameter/Wall	Connection	Length	Drill Rig Model
A216492-20	1.660" / .191	HIWS1-200	6'	D7x11, D9x13, JT9, JT922
A221628-20	2.063" / .260	HIWS1-400	10'	D18x22, D20x22, D23x30, JT1220, JT2020, DD2024, DD2226
A222276-20	2.375" / .254	HIWS1-600	10'	D23x30 S3, D24x40, JT2020, JT25, JT2720M1, JT30, JT3020, DD3238, UNI 25, UNI 30x40

DITCH WITCH® ADVANTAGE SERIES

Part Number	Tube Diameter/Wall	Connection	Length	Drill Rig Model
A355-1149-20	1.600" / .190	1.30-5	6'	JT9, JT10
A355-1106-20	2.060" / .295	1.94-4	10'	JT20, JT2020
A355-1244-20	2.375" / .300	2.11-4	9.8"	JT25, JT30, JT3020, JT2720M1
A355-1200-10	3.500" / .394	3.27-4	14.75"	JT100

Drive Chucks + Saver Subs

DRIVE CHUCKS FOR VERMEER®

Little investment, big results. Your drive chuck or saver sub touches every rod, every time. Regular replacement is the single best thing you can do to ensure long thread life for your drill stem.

VERMEER® DRIVE CHUCKS

Part Number	Pipe Diameter	Thread	Length	Drill Rig Model
296255343	1.66	200	5.5" FL-to-SH	D7x11, D7x11A
296255345	1.90	250	6.5" FL-to-SH	D16x20, D16x20A, D18x22, D20x22
296279707	2.06	400	4.0" FL-to-SH	D18x22, D20x22
230806001	2.38	600	5.5" FL-to-SH	D24x40, D24x40A, D24x40 S2, D24x40 S3
284143001	2.38	602	5.0" FL-to-SH	D33x44, D35x50, D36x50 Series 2
296309649	2.38	650	5.5" FL-to-SH	D36x50 Series 2, D40x55 S3
296309506	2.62	700	5.0" FL-to-SH	D36x50 Series 2, D40x55 S3
284097001	2.87	902	4.0" FL-to-SH	D55x100, D75x100
296255395	3.50	802	7.2" FL-to-SH	D80x120, D100x120, D100x120 Series 2
296255476	3.50	800	7.4" FL-to-SH	D50x100, D50x100A, D55x100, D75x100, D60x90 Series 2, D60x90 S3, D80x100, D80x100 Series 2
296309513	3.50	1000	7.2" FL-to-SH	D80x120, D100x120, D100x120 Series 2, D100x140, D100x140 S3

VERMEER® DRIVE CHUCK ASSEMBLIES

Part Number	Pipe Diameter	Thread	Length	Drill Rig Model
296255361	1.66	200	10" FL-to-SH	D7x11, D7x11A, D7x11 Series 2, D9x13 S3
296255364	1.90	250	11" FL-to-SH	D16x20, D16x20A, D18x22, D20x22
296279709	2.06	400	11" FL-to-SH	D18x22, D20x22
230980001	2.38	600	12" FL-to-SH	D24x40, D24x40A
249169001	2.38	600	13.5" FL-to-SH	D24x40A
284142001	2.38	602	14.5" FL-to-SH	D33x44, D35x50, D36x50 Series 2
296273550	2.38	600	16" FL-to-SH	D24x40 Series 2, D24x40 S3
296443778	2.38	600	16.5" FL-to-SH	D24x40 Series 2, D24x40 S3
296309648	2.38	650	14.5" FL-to-SH	D36x50 Series 2, D40x55 S3
296309505	2.62	700	14.5" FL-to-SH	D34x50, D40x55 S3
296443822	2.62	700	15.5" FL-to-SH	D40x55 S3
284094001	2.89	902	16.5" FL-to-SH	D55x100, D75x100
280849001	3.50	802	16.25" FL-to-SH	D80x120, D100x120, D100x120 Series 2
296255475	3.50	800	16.4" FL-to-SH	D50x100, D50x100A, D55x100, D75x100, D60x90 Series 2, D60x90 S3, D80x100, D80x100 Series 2
296309516	3.50	1000	14.2" FL-to-SH	D80x120, D100x120, D100x120 Series 2, D100x140, D100x140 S3

Drive Chucks + Saver Subs

SAVER SUBS FOR VERMEER®

VERMEER® SAVER SUBS

Part Number	Pipe Diameter	Thread	Length	Drill Rig Model
296255351	1.66	200	4" SH-to-SH	D7x11, D7x11A, D10x15
296276507	1.66	200	5" SH-to-SH	D6x6, D7x11 S2, D9x13 SII, D9x13 S3, D10x14, D10x15
296255352	1.90	250	4" SH-to-SH	D16x20, D16x20A, D18x22, D20x22
296291966	1.90	250	10.1" SH-to-SH	D16x20 SII, D20x22 S3
296279708	2.06	400	6.5" SH-to-SH	D18x22, D20x22
296281195	2.06	400	10.1" SH-to-SH	D20x22 SII, D20x22 S3, D23x30 S3
230945001	2.37	600	5.5" SH-to-SH	D24x40, D24x40A
249166001	2.37	600	7" SH-to-SH	D24x40A
276323001	2.37	600	9.5" SH-to-SH	D24x40 Series 2
296443760	2.37	600	10" SH-to-SH	D24x40 S3
296409414	2.37	600	10.1" SH-to-SH	D23x30 S3
284144001	2.37	602	8.5" SH-to-SH	D33x44, D35x50, D36x50 Series 2
296309650	2.37	650	8" SH-to-SH	D36x50 Series 2, D40x55 S3
296309507	2.62	700	8.5" SH-to-SH	D36x50 Series 2, D40x55 S3
296443821	2.62	700	9.5" SH-to-SH	D40x55 S3
284098001	2.87	902	7" SH-to-SH	D55x100, D75x100
296344115	2.87	900	8.7" SH-to-SH	D60x90, Series 2 & S3
296255396	3.50	802	7" SH-to-SH	D80x120, D100x120, D100x120 Series 2
296255477	3.50	800	7" SH-to-SH	D50x100, D50x100A, D75x100, D60x90 Series 2, D60x90 S3, D80x100, D80x100 Series 2
296309515	3.50	1000	7" SH-to-SH	D80x120, D100x120, D100x120 Series 2, D100x140, D100x140 S3



Drive Chuck + Saver Sub

Drive Chucks + Saver Subs

DRIVE CHUCKS + SAVER SUBS FOR DITCH WITCH®

DITCH WITCH® THREAD DRIVE CHUCKS

Part Number	Pipe Diameter	Thread	Length	Drill Rig Model
300-7767	1.66	1.30-5 BOX	9.9" FL-to-SH	JT9, JT922, JT10
400-604	1.82	1.47-4 BOX	9.1" FL-to-SH	JT1220
400-905	2.06	1.94-4 BOX	11.25" FL-to-SH	JT2020

DITCH WITCH® HIWS1 SAVER SUBS

Part Number	Pipe Diameter	Thread	Length	Drill Rig Model
300-7767-1305	1.60	200 PIN X 1.30-5 BOX	4" SH-to-SH	JT9, JT922, JT10
296255351	1.66	200 PIN X 200 BOX	4" SH-to-SH	JT9, JT922, JT10
300-7767-200PSS	1.66	200 PIN X 200 PIN	3" SH-to-SH	JT9, JT922, JT10
400-604-250SS	1.90	400 BOX X 250 BOX	5.5" SH-to-SH	JT1220
400-604-250PSS	1.90	400 BOX X 250 PIN	3" SH-to-SH	JT1220
P0789	2.06	400 BOX X 400 PIN	3.75" SH-to-SH	JT1220, JT2020, JT20
400-905-600PSS	2.37	600 BOX X 600 PIN	5.5" SH-to-SH	JT2020, JT20
400-905-600SS	2.37	600 BOX X 600 BOX	8" SH-to-SH	JT2020, JT20
400-905-1944	2.06	600 BOX X 1.94-4 BOX	8" SH-to-SH	JT2020, JT20
400-1223-211	2.37	602 PIN X 2.11-4 BOX	8.5" SH-to-SH	JT2720M1, JT3020
400-1223-600	2.37	602 PIN X 600 BOX	8.5" SH-to-SH	JT2720M1, JT3020
400-1223-600PSS	2.37	602 PIN X 600 PIN	6" SH-to-SH	JT2720M1, JT3020
284144001	2.37	602 PIN X 602 BOX	8.5" SH-to-SH	JT2720M1, JT3020
284169001	2.62	702 PIN X 702 BOX	7.9" SH-to-SH	JT4020M1
400-1134-259	2.81	702 PIN X 2.59-4 BOX	7.9" SH-to-SH	JT4020M1
400-1132-3274	3.63	802 BOX X 3.27-4 BOX	14.9" SH-to-SH	JT7020, JT8020, JT100
400-1132-800SS	3.50	802 BOX X 800 BOX	14.9" SH-to-SH	JT7020, JT8020, JT100
400-1132-800PSS	3.50	802 BOX X 800 PIN	11.4" SH-to-SH	JT7020, JT8020, JT100
400-1132-802PSS	3.50	802 BOX X 802 PIN	11.4" SH-to-SH	JT7020, JT8020, JT100
400-1132-802SS	3.50	802 BOX X 802 BOX	14.9" SH-to-SH	JT7020, JT8020, JT100

Drive Chucks + Saver Subs

DRIVE CHUCKS + SAVER SUBS FOR DITCH WITCH®

DITCH WITCH® HIWS1 DRIVE CHUCKS

Part Number	Pipe Diameter	Thread	Length	Drill Rig Model
300-7767-200DC	1.66	200 BOX	4" FL-to-SH	JT9, JT922, JT10
300-7827-200	1.66	200 BOX	6.5" FL-to-SH	JT5, JT520
300-7767-200	1.66	200 BOX	11" FL-to-SH	JT9, JT922
300-7767-200P	1.66	200 PIN	9" FL-to-SH	JT9, JT922
400-604-400P	2.06	400 PIN	5.25" FL-to-SH	JT1220
400-604-400	2.06	400 BOX	10.25" FL-to-SH	JT1220, JT2020, JT20
400-905-402	2.06	402 BOX	11.25" FL-to-SH	JT2020, JT20
400-905-600DC	2.38	600 PIN	3.25" FL-to-SH	JT2020
400-905-600	2.38	600 BOX	11.25" FL-to-SH	JT2020, JT20
400-905-600P	2.38	600 PIN	8.75" FL-to-SH	JT2020, JT20
400-1224-602DC	2.38	602 BOX	10.9" FL-to-SH	JT2720M1
400-1229-602DC	2.38	602 BOX	10.9" FL-to-SH	JT2720M1
400-1223-602DC	2.38	602 BOX	19.2" FL-to-SH	JT3020
400-1134-702DC	2.62	702 BOX	12.7" FL-to-SH	JT4020M1
400-1132-802DC	3.50	802 BOX	13" FL-to-SH	JT7020, JT8020, JT100
400-2115-802DC	3.50	802 BOX	14" FL-to-SH	JT100

DITCH WITCH® HIWS1 DRIVE CHUCK ASSEMBLIES

Part Number	Pipe Diameter	Thread	Length	Drill Rig Model
300-7767-1305AS	1.60	1.30-5 BOX	9.9" FL-to-SH	JT9, JT922
300-7767-200AS	1.66	200 BOX	9.9" FL-to-SH	JT9, JT922
300-7767-200PAS	1.66	200 PIN	8.9" FL-to-SH	JT9, JT922
400-604-250AS	1.90	250 BOX	10.75" FL-to-SH	JT1220
400-604-250PAS	1.90	250 PIN	7.75" FL-to-SH	JT1220
400-604-400PAS	2.06	400 PIN	9" FL-to-SH	JT1220, JT2020, JT20
400-905-600PAS	2.37	600 PIN	8.75" FL-to-SH	JT20, JT2020
400-905-600AS	2.37	600 BOX	11.25" FL-to-SH	JT20, JT2020
400-1224-600AS	2.37	600 BOX	19.3" FL-to-SH	JT2720M1
400-1224-211AS	2.37	2.11-4 BOX	19.3" FL-to-SH	JT2720M1
400-1224-600PAS	2.37	600 PIN	16.8" FL-to-SH	JT2720M1
400-1224-602AS	2.37	602 BOX (HXT)	19.3" FL-to-SH	JT2720M1
400-1229-602AS	2.37	602 BOX (HXT)	19.3" FL-to-SH	JT2720M1
400-1229-600AS	2.37	600 BOX	19.3" FL-to-SH	JT2720M1
400-1229-211AS	2.37	2.11-4 BOX	19.3" FL-to-SH	JT2720M1
400-1229-600PAS	2.37	600 PIN	16.8" FL-to-SH	JT2720M1
400-1223-600AS	2.37	600 BOX	27.6" FL-to-SH	JT3020
400-1223-600PAS	2.37	600 PIN	25.1" FL-to-SH	JT3020
400-1223-602AS	2.37	602 BOX (HXT)	27.6" FL-to-SH	JT3020
400-1134-702AS	2.62	702 BOX (HXT)	20.5" FL-to-SH	JT4020M1
400-1134-259AS	2.81	2.59-4 BOX	20.5" FL-to-SH	JT4020M1

Quick Connects + Adapters + Collars

HX-1TRN®

The HX-1TRN® saves time, provides for a safer work environment, and is designed to be compatible with threads on every downhole tool you have in the box.



HX-1TRN® QUICK CONNECT SYSTEM*

The revolutionary HX-1TRN® quick connect requires just a single, 360-degree rotation to fully connect or disconnect from your tooling. With its patented Quad-Lead design and negative load flank, the Hunting HX-1TRN® provides a thread pattern with a lead every ninety degrees, so you have four places to start threading. While most competitive quick connect products take from 4 to 15 rotations to connect the tools fully, the HX-1TRN® just takes one.

*For machines greater than 30,000 lbs, or reamers greater than 8 in, we strongly recommend H464 connections.

STARTER RODS FOR VERMEER®

Part Number	HX Series Thread	Drill Pipe Thread	Overall Length
H404250	H404	250	21.2"
H404400	H404	400	21.2"
H404400XL	H404	400	26.0"
H404600	H404	600	21.2"
H404602	H404	602 (HXT)	21.2"
H464600	H464	600	28.5"
H464602	H464	602 (HXT)	28.5"
H464650	H464	650	28.5"
H464700	H464	700	28.5"

STARTER RODS FOR DITCH WITCH®

Part Number	HX Series Thread	Drill Pipe Thread	Overall Length
H404400DWP	H404	400 PIN	36"
H404600DWP	H404	600 PIN	36"
H404602DWP	H404	602 PIN (HXT)	36"
H404169FDWP	H404	1.69-6 PIN W/ FLATS	36"
H404194FDWP	H404	1.94-4 PIN W/ FLATS	36"
H404194DWP	H404	1.94-4 PIN	36"
H404211DWP	H404	2.11-4 PIN	36"
H464211DWP	H464	2.11-4 PIN	36"

COLLARS

Part Number	HX Series Thread	Octagon Size	Overall Length
H26258	H404	2.625 IN	7.25"
H26258T (W/ TEETH)	H404	2.625 IN	7.25"
H30008	H464	3.000 IN	7.25"
H30008T (W/ TEETH)	H464	3.000 IN	7.25"

ADAPTERS

Part Number	HX Series Thread	Adapter Thread	Overall Length
H4042000	H404	2.000 IF PIN	12"
H4046000	H404	600 PIN	12"
H4042375	H404	2.375 REG PIN	12"
H4042375B	H404	2.375 REG BOX	12"
H4042875	H404	2.875 REG PIN	12"
H4041944	H404	1.94-4 PIN	12"
H4041944B	H404	1.94-4 BOX	10"
H4042114	H404	2.11-4 PIN	12"
H4042125W	H404	2.125 LPT BOX WELD OVER	12"
H4040000W	H404	WELD PIN	10"
H4043000	H404	3.00 ROTOLOCK BOX	11"
H4043500	H404	3.50 ROTOLOCK BOX	11"
H4643500	H464	3.50 ROTOLOCK BOX	12"
H4646000	H464	600 PIN	13.5"
H4642375	H464	2.375 REG PIN	13.5"
H4642875	H464	2.875 REG PIN	13.5"
H4642875IF	H464	2.875 IF PIN	13.5"
H4642594	H464	2.59-4 PIN	13.5"
H4642125W	H464	2.125 LPT BOX WELD OVER	13.5"
H4640000W	H464	WELD PIN	11"

ACCESSORIES

Part Number	Description	Use with HX Series Connection
B1000-218	1.234 X .139 O-RING	H404
B1000-323	1.287 X .210 O-RING	H464
NC103	3/4-16 CAP SCREW (NEW STYLE)	H404 / H464

DRILL PIPE
DRIVE CHUCKS + SAVER SUBS
QUICK CONNECTS ADAPTERS + COLLARS
TRANSMITTER HOUSINGS
ROCK TOOLS
JAW BLOCKS
DRILL PIPE SPECS + DIMS

DRILL PIPE
DRIVE CHUCKS + SAVER SUBS
QUICK CONNECTS ADAPTERS + COLLARS
TRANSMITTER HOUSINGS
ROCK TOOLS
JAW BLOCKS
DRILL PIPE SPECS + DIMS

H-SERIES – VERMEER® QF COMPATIBLE*

STARTER RODS

Part Number	H Series Thread	Drill Pipe Thread	Length
H300200	H300	200	21.2"
H400250	H400	250	21.2"
H400400	H400	400	21.2"
H400400XL	H400	400	26.0"
H400600	H400	600	21.2"
H400602	H400	602 (HXT)	21.2"
H400650	H400	650	21.2"
H460600	H460	600	28.5"
H460602	H460	602 (HXT)	28.5"
H460650	H460	650	28.5"
H460700	H460	700	28.5"

ADAPTERS

Part Number	H Series Thread	Adapter Thread	Length
H3002000	H300	2.000 IF PIN	9.5"
H3002375	H300	2.375 REG PIN	10.5"
H3006000	H300	600 PIN	10.5"
H4002000	H400	2.000 IF PIN	12.0"
H4002375	H400	2.375 REG PIN	12.0"
H4006000	H400	600 PIN	12.0"
H4602375	H460	2.375 REG	13.0"
H4602875	H460	2.875 REG	13.5"
H4606000	H460	600 PIN	13.0"

*For machines greater than 30,000 lbs, or reamers greater than 8 in, we strongly recommend H464 connections.

COLLARS

Part Number	H Series Connection	Octagon Size	Length
H21308	H300	2.130 IN	4.50"
H21308T (W/ TEETH)	H300	2.130 IN	4.50"
H26258	H400	2.625 IN	7.25"
H26258T (W/ TEETH)	H400	2.625 IN	7.25"
H30008	H460	3.000 IN	7.25"
H30008T (W/ TEETH)	H460	3.000 IN	7.25"

ACCESSORIES

Part Number	Description	Use with LPT Connection
H0014	3/8-16 X 1/2 CAP SCREW	H300
B1000-213	.921 X .139 O-RING	H300
H0004	1/2-13 X 1/2 CAP SCREW	H400/H460
B1000-218	1.234 X .139 O-RING	H400
B1000-323	1.287 X .210 O-RING	H460
NC103	X3/4-16 CAP SCREW (NEW STYLE)	H400/H460

DITCH WITCH® EZ CONNECTS

DITCH WITCH® CONVERSION TRANSITION SUBS

Part Number	Pipe Dia / Length	Thread	Drill Rig Model
400-1261-200	1.66 / 20.0"	200 PIN X 1.31-6M EZ2	JT5, JT520
400-1384-200	1.66 / 26.8"	200 PIN X 1.63-6M EZ2	JT9, JT922, JT100
400-918-250	1.90 / 34.8"	250 PIN X 1.88-6M EZ3	JT1220
400-918-400	2.06 / 34.8"	400 PIN X 1.88-6M EZ3	JT1220, JT2020
401-301-400	2.06 / 35.8"	400 PIN X 2.00-6M EZ2	JT1220, JT2020
401-301-402	2.06 / 35.8"	402 PIN X 2.00-6M EZ2	JT2020
401-301-600	2.38 / 35.8"	600 PIN X 2.00-6M EZ2	JT2020
400-1030-600	2.38 / 42.0"	600 PIN X 2.25-6M EZ3	JT25, JT30, JT3020
400-1030-602	2.38 / 42.0"	602 PIN X 2.25-6M EZ3	JT25, JT30, JT3020
400-095-702	2.62 / 42.0"	702 PIN X 2.63-6M EZ2	JT4020M1

DITCH WITCH® THREAD TRANSITION SUBS

Drill Rig Model	Part Number	Pipe Dia / Length	Thread
JT9, JT922, JT10	400-1384	1.66 / 26.8"	1.30-5 PIN X 1.63-6M EZ2
JT1220	400-918	1.82 / 34.8"	1.47-4 PIN X 1.88-6M EZ3
JT20, JT2020	401-301	2.06 / 35.8"	1.94-4 PIN X 2.00-6M EZ2
JT24	400-2745	2.25 / 42.0"	1.76-4 PIN X 2.00-6M EZ2
JT25, JT30, JT3020	400-1030	2.38 / 42.0"	2.11-4 PIN X 2.25-6M EZ3

COLLARS

Part Number	EZ Connection	Octagon Size	Length
H156EZ2	1.31-6M EZ2	1.560 in	3.0"
H200EZ2	1.63-6M EZ2	2.000 in	4.0"
H225EZ3	1.88-6M EZ3	2.250 in	5.0"
H250EZ2	2.00-6M EZ2	2.500 in	5.3"
H275EZ3	2.25-6M EZ3	2.750 in	6.5"

EZ CONNECT ADAPTERS

Part Number	EZ Connection	Adapter Thread	Length
HD163200EZ2	1.63-6M EZ2	2.000 IF PIN	6.5"
HD188200EZ3	1.88-6M EZ3	2.000 IF PIN	7.0"
HD188238EZ3	1.88-6M EZ3	2.375 REG PIN	7.0"
HD200200EZ2	2.00-6M EZ2	2.000 IF PIN	7.0"
HD200238EZ2	2.00-6M EZ2	2.375 REG PIN	7.5"
HD225238EZ3	2.25-6M EZ3	2.375 REG PIN	9.0"

LPT

VERMEER® LP HEX STARTER RODS

Part Number	Size	Thread	Overall Length
276261001	1.625 LPT	200	20"
240895001	1.625 LPT	250	20"
234840001	2.125 LPT	250	20"
250658001	2.125 LPT	400	21.2"
250658400	2.125 LPT	400	26.0"
234826001	2.125 LPT	600	21.2"
284148001	2.125 LPT	602 (HXT)	21.7"
296309646	2.125 LPT	650	21.1"
296321280	2.125 LPT	700	21.1"

ADAPTERS

Part Number	LPT Thread	Adapter Thread	Length
289403001	2.125 LPT Pin	2.375 Reg Pin	12.0"
289403002	2.125 LPT Pin	2.00 IF Pin	12.0"

COLLARS

Part Number	LPT Connection	Hexagon Size	Length
H25006	2.125 LPT	2.500" HEX	7.2"
H25006T (w/ teeth)	2.125 LPT	2.500" HEX	7.2"

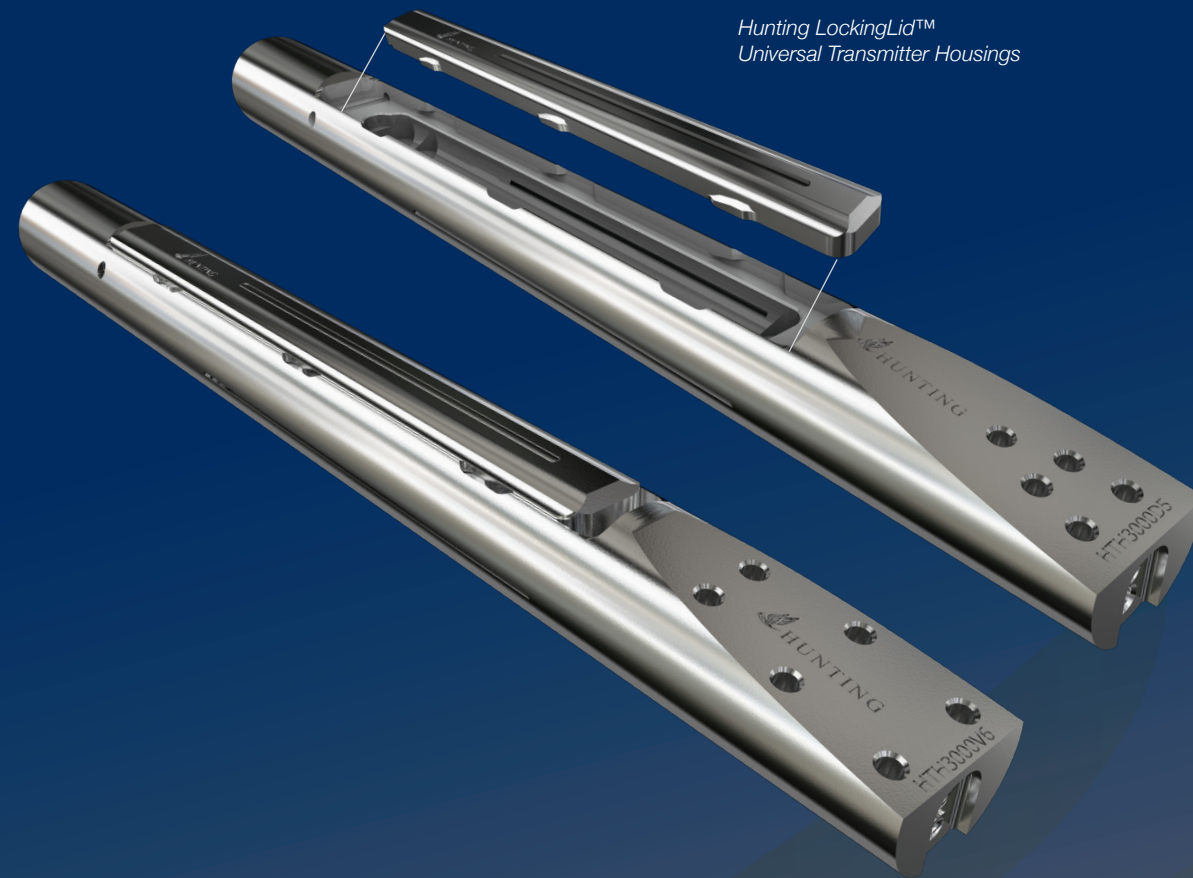
ACCESSORIES

Part Number	Description	Use with LPT Connection
H0014	3/8-16 X 1/2 CAP SCREW	1.625 LPT
H0004	1/2-13 X 1/2 CAP SCREW	2.125 LPT
480801	1-1/2 X 0.070 O-RING	2.125 LPT

Universal Transmitter Housing

WITH HUNTING LOCKINGLID™

With patented 6-Tab LockingLid™ & recessed dual fluid nozzles (nozzles included with housing), Side-Load housings for use with DigiTrak® 15" style, Subsite 86B, 17T, and UGM Echo 70 transmitters.



Hunting LockingLid™
Universal Transmitter Housings

Universal Transmitter Housing

WITH HUNTING LOCKINGLID™

VERMEER STYLE 6 BOLT HOUSINGS

Drill Rig Thrust	Diameter	Thread	Bolt Pattern	Part Number
5,000-20,000 lb 22.2-89.9 kN	2.75" 70 mm	2.000" IF	6, 1/2" Bolt	HTH2750V6
20,000-24,000 lb 89.9-106.8 kN	3.00" 76 mm	2.375" REG	6, 1/2" Bolt	HTH3000V6
20,000-40,000 lb 89.9-177.9 kN	3.25" 83 mm	2.375" REG	6, 1/2" Bolt	HTH3250V6

DITCH WITCH STYLE 5 BOLT HOUSINGS

Drill Rig Thrust	Diameter	Thread	Bolt Pattern	Part Number
5,000-20,000 lb 22.2-89.9 kN	2.75" 70 mm	2.000" IF	5, 12 mm Bolt	HTH2750D5
20,000-24,000 lb 89.9-106.8 kN	3.00" 76 mm	2.375" REG	5, 12 mm Bolt	HTH3000D5
20,000-24,000 lb 89.9-106.8 kN	3.00" 76 mm	2.375" REG	6, 16 mm Bolt	HTH3000D6
20,000-40,000 lb 89.9-177.9 kN	3.25" 83 mm	2.375" REG	6, 16 mm Bolt	HTH3250D6

REPLACEMENT PARTS

Part Number	Description	Part Number	Description
HTH1000	Replacement Lid (fits 2.75" Housing)	N1260	Recessed Fluid Nozzle 1/8" (1/4" NPT)
HTH2000	Replacement Lid (fits 3.00" & 3.25" Housing)	H0048	1/2"-13 x 1" Socket Head Cap Screw
H0058	Replacement LockingLid pads (8 pads)	H0007	M12-1.75 x 20mm Socket Head Cap Screw
41LW95	3/8" X 2-1/2" Coiled Pin, Stainless Steel	H0049	M16-2.00 x 35mm Socket Head Cap Screw
H0060	5/16" Punch (Removal tool for 3/8" pins)		

LOCKINGLID™ ISOLATOR KITS

Includes Front/Rear Isolator + LockingLid™ cover insert (one kit included with each housing).
For use with Universal Housings and Rockknife Housing. See page 25 for reference images of isolators.

Part Number	Universal Transmitter Housing and Rockknife Kits
LL_DCI	LockingLid™ Isolator Kit - DCI 15" style (also for use with Subsite 15T and Echo 50)
LL_86B	LockingLid™ Isolator Kit - 86B
LL_17T	LockingLid™ Isolator Kit - 17T
LL_ECHO70	LockingLid™ Isolator Kit - Echo 70

Part Number	Rockknife Kits Only
LL_DCI_19	LockingLid™ Isolator Kit - DCI 19"
LL_ECHO90	LockingLid™ Isolator Kit - Echo 90 (For use with Rockknife only)



Hunting's New Dual Rod Housing

Designed based upon Hunting's proven HDD mud motor technology, the new Rockknife™ transmitter housing can withstand the toughest of conditions. The Rockknife™ uses patent pending mud lube bearings to handle downhole forces and control fluid flow through the bearings. Mud lube bearings mean no more grease and no more seals. Rebuilding the Rockknife is simply replacing the bearings with no specialty tooling needed. Its 6-tab patented LockingLid™, used on Hunting's mud motors and dirt housings, eliminates the need for threaded fasteners.

- Mud Lube Bearings
- No "rebuild-kit" needed.
- 6-tab patented LockingLid™
- Compatible with Subsite®, DCI® and UM® electronics.
- Designed for use with Ditch Witch® AT30, AT32, AT40, AT60, and AT100 drills.

ROCKNIFE ALL TERRAIN HOUSING WITH 6-TAB LOCKINGLID™

Part Number	Description (2 degree bend)	For pipe thread
RK30	Rockknife 30 (AT30)	2.77-4
RK32	Rockknife 32 (AT32) 2-7/8" Bit Box	2.36-4
RK32L	Rockknife 32 (AT32) 3-1/2" Bit Box	2.36-4
RK40	Rockknife 40 (AT40)	2.95-4
RK60	Rockknife 60 (AT60, AT4020M1)	3.25-4
RK100	Rockknife 100 (AT100)	3.44-4

- 120 and 240 degree transmitter slots can be added, 2 week lead time.
- See page 25 for reference images of isolators.
- One isolator kit provided with each housing (please specify when ordering, 86B, 17T, DCI 15", DCI 19", ECHO 70, ECHO 90)



RK30/RK32 REPLACEMENT PARTS

Part Number	Description	Models
M105	Bearing (Loctite 242 included)	RK30 RK32
400-234-RK30	Hex Collar	RK30
41LR44	7/16" x 1.5" Roll Pin	RK30
501AT03 C	RK30 Bearing Mandrel 2-7/8" Reg	RK30
532AT03 C	RK32 Bearing Mandrel 2-7/8" Reg	RK32
532AT04 C	RK32 Bearing Mandrel 3-1/2" Reg	RK32
500AT02.1	Lower Housing-Bearing Retaining Cap included	RK30 RK32
501AT04	Front Bearing Spacer	RK30 RK32
501AT1804	Retaining Nut	RK30 RK32
500AT02.2	Bearing Retaining Cap	RK30 RK32
M105STAND	Bearing Removal Stand	RK30 RK32
M105DRIVER	Bearing Removal Driver	RK30 RK32

RK40/RK60/RK100 REPLACEMENT PARTS

Part Number	Description	Models
M505	Bearing (Loctite 242 included)	RK40 RK60 RK100
355-1050-104	Hex Collar	RK60 RK100
41LZ92	3/8" x 1.0" Roll Pin	RK60 RK100
502AT03 C	RK40 Bearing Mandrel 3-1/2" Reg	RK40
560AT03 C	RK60 Bearing Mandrel 3-1/2" Reg	RK60
5100AT03 C	RK100 Bearing Mandrel 3-1/2" Reg	RK100
502AT02	Lower Housing-Bearing Retaining Cap included	RK40 RK60 RK100
502AT31	Front Bearing Spacer	RK40 RK60 RK100
502AT33 C	Retaining Nut	RK40 RK60 RK100
502AT02.2	Bearing Retaining Cap	RK40 RK60 RK100
M505STAND	Bearing Removal Stand	RK40 RK60 RK100
M505DRIVER	Bearing Removal Driver	RK40 RK60 RK100

ROCKNIFE COMMON PARTS

Part Number	Description	Models
400AT21	Transmitter Cover	RK30 32 40 60 100
41LY05	1/2"x3" Coiled Spring Pin for transmitter cover	RK30 32 40 60 100
POXX-01	Carbide Bit (Weld On)	RK30 32 40 60 100
H0059	3/8" Punch (Removal tool for roll pins)	RK30 32 40 60 100
230718	Loctite 242, 0.5 ml	RK30 32 40 60 100
40173502	1/4" NPT Plug	RK30 32 40 60 100
RK_250500	Wear Pad (Weld On)	RK30 32 40 60 100

Mud Motors

WHEN THE GROUND GETS TOUGH,
HUNTING MUD MOTORS POWER THROUGH

The Hunting M-Series Mud Motors incorporate SWB™ (Survey While Boring) technology that significantly improves your ability to steer by locating the sonde housing into the bearing housing just 3 feet behind the bit. Hunting offers the lowest flow, highest torque mud motor in the industry.



Mud Motors

THE LOWEST FLOW, HIGHEST TORQUE
MUD MOTOR IN THE INDUSTRY

M SERIES MUD MOTOR WITH UP-FRONT WALK-OVER SYSTEM TRANSMITTER

Mud Motor Size	Bit Box	Bit-to-Transmitter / Bit-to-Bend	Mud Flow	RPM	Max Torque (Stall)	Transmitter Size
M400 4.75 IN	2.875" REG	18 INCH / 52 INCH	50-100 GPM 2.25 REV/GAL	112-225	1,090 FT-LBS @800 PSI ΔP	15" x 1.25", 19" x 1.25"
M575 5.75 IN	4.5" REG	30 INCH / 82 INCH	80-160 GPM 1.06 REV/GAL	85-170	2,600 FT-LBS @900 PSI ΔP	15" X 1.25"; 19" X 1.25"
M675 6.75 IN	4.5" REG	31 INCH / 96 INCH	200-600 GPM 0.28 REV/GAL	56-168	6,660 FT-LBS @680 PSI ΔP	15" X 1.25"; 19" X 1.25"
M800 8.00 IN	6.62" REG	39 INCH / 111 INCH	200-600 GPM 0.17 REV/GAL	34-102	11,246 FT-LBS @675 PSI ΔP	24" X 1.43"

MUD LUBE MOTORS – CLASSIC MUD MOTOR FOR WIRELINE APPLICATIONS

Mud Motor Size	Bit Box / Bit-to-Bend	Mud Flow	RPM	Max Torque (Stall)
E500 5.00 IN	3.5" REG 53 IN	125-175 GPM 0.70 REV/GAL	88-123	2,900 FT-LBS @800 PSI ΔP
E700 7.00 IN	4.5" REG 48 IN	200-600 GPM 0.25 REV/GAL	50-150	10,000 FT-LBS @1,200 PSI ΔP

MUD MOTOR DRILL BITS

Part Number	Bit Style	Connection	Diameter	IADC Code	Bit Type
PDC0512513S	PDC	2.875" REG	5.125"	513S	Polycrystalline diamond
0550117	Tricone	2.875" REG	5.5"	117	Mill tooth, sealed bearing
0550517X	Tricone	2.875" REG	5.5"	517X	Tungsten carbide inserts, sealed bearing
0550537X	Tricone	2.875" REG	5.5"	547X	Tungsten carbide inserts, sealed bearing
MMB0750117	Tricone	3.5" REG	7.5"	547	Tungsten carbide inserts, sealed bearing

- Contact dealer for additional sizes

Jaw Blocks

JAW BLOCK VERMEER® DIRECT REPLACEMENT

Part Number	Use with Pipe Dia	Thread / Tool Joint Diameter	Jaw Side	Models
H0053	1.66	#200 - 1.875 Dia	Stationary	D7x11, D8x12 D9x13, D10x15
H0054	1.66	#200 - 1.875 Dia	Cylinder	
H0066	1.90	#250 - 2.125 Dia	Stationary	D16x20, D20x22
H0067	1.90	#250 - 2.125 Dia	Cylinder	D16x20, D20x22
H0064	2.06	#400 - 2.250 Dia	Stationary	D23x30
H0065	2.06	#400 - 2.250 Dia	Cylinder	D23x30
H0055	2.38	#600 - 2.625 Dia	Stationary	D23x30
H0056	2.38	#600 - 2.625 Dia	Cylinder	D23x30
H0044	2.38	#600 - 2.625 Dia	NA	D24x40, 24x40SII
H0062	2.38	#700 - 3.100 Dia	NA	D36x50, D40x55

JAW BLOCK DITCH WITCH® DIRECT REPLACEMENT

Part Number	Use with Pipe Dia	Thread / Tool Joint Diameter	Models
H0040	1.35-2.06	1.10-5 / 1.880 Dia, 1.41-6 / 2.000 Dia 1.47-4 / 2.375 Dia, 1.94-4 / 2.625 Dia	JT9, JT922, JT10, JT1220, JT20, JT2020
H0051	2.25	1.76-4 / 2.625 Dia	JT24
H0043	2.38	2.11-4 / 2.750 Dia	JT25, JT30, JT3020
H0052	2.25/2.94	2.77-4 / 3.250 Dia	AT30 AT3020
H0063	2.84	2.10-4 / 3.125 Dia	JT40
H0057 (Jaw Insert)	350	3.27-4 / 4.000 Dia	JT7020, JT8020, JT100

JAW BLOCK DITCH WITCH® CONVERSION

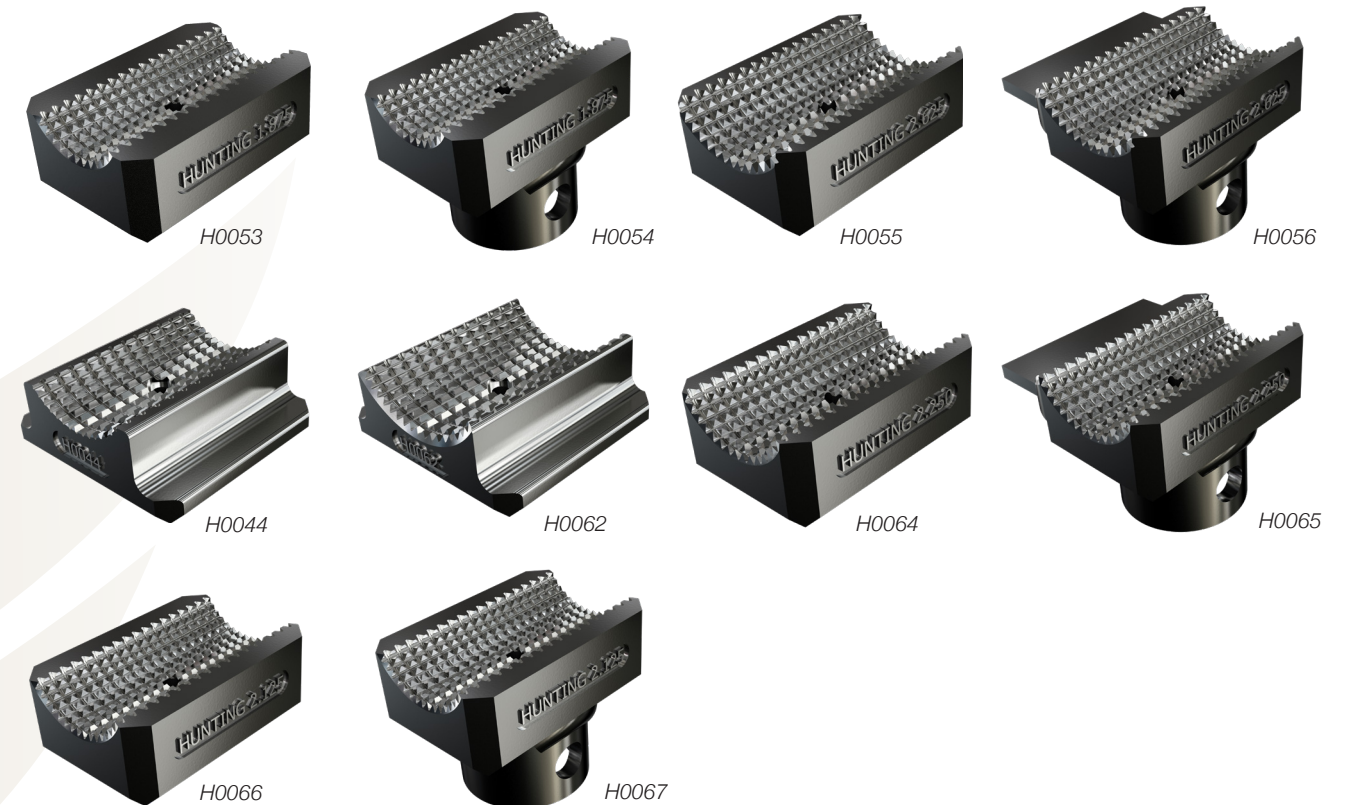
Part Number	Use with Pipe Dia	Thread / Tool Joint Diameter	Models
H0002	1.66	#200 - 1.875 Dia	JT9, JT922, JT10
	1.90	#250 - 2.125 Dia	
	2.06	#400 - 2.250 Dia	
H0040	2.38	#600 - 2.625 Dia	JT1220, JT20, JT2020
H0003	2.38	#600 - 2.625 Dia	JT3020, JT25, JT30
H0043	2.38	#602 - 2.750 Dia	JT3020, JT25, JT30
H0036	3.50	#800 - 3.625 Dia	JT7020, JT8020, JT100
H0057 (Jaw Insert)	3.50	3.27-4 4.000 Dia	JT7020, JT8020, JT100

Jaw Block Reference Images

DITCH WITCH® MACHINES



VERMEER® MACHINES



Rod Wipers

Hunting's Dual Split Rubber Rod Wipers are manufactured from the highest quality solid rubber and are designed as a direct replacement for your OEM wipers. Keep your drill rod clean and save time doing it—no break-out necessary!



DUAL SPLIT RUBBER ROD WIPERS

Part Number	Wiper Diameter	Hole Size	Drill Pipe Diameter Range	Drill Models
H166183	9 IN	1.55 IN	1.66 - 1.83 IN	JT5, JT10, D10x15
H190206	9 IN	1.75 IN	1.90 - 2.06 IN	JT20, D20x22, D23x30
H237500	9 IN	2.05 IN	2.375 IN	JT25, JT30, D24x40

Grease

Custom formulated for Hunting, our premium copper base grease will keep your threads running smoothly.



PERFORMANCE LUBE COPPER

Grease Type	Part Number	Gallons	Pallet Quantity
COPPER	0304010HP	1	120
COPPER	0304020HP	2	80

Machine Roadmaps

Hunting not only supplies all of our drill pipe specifically designed and precision manufactured to match the OEM specs.

We also have machine level Roadmaps to assist you in correctly specifying all of the components in your drill string and a full line of drive chucks, sub savers, starter rods and quick connects to provide one-stop shopping.



Scan the code to view Hunting Roadmaps

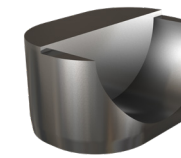
Isolator Reference Images

See pages 16 and 19 for technical data.

DCI



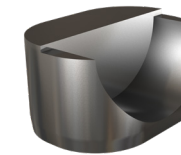
F5_DIRT



F5_RS



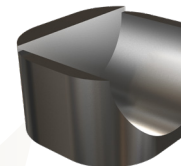
F5_ROCK



F5_RS



F5_19_ROCK

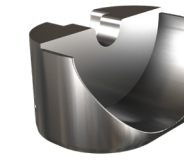


F5_RS_19

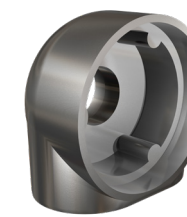
SUBSITE



86B_FS



86B_RS



17TF_DIRT
17TF_ROCK

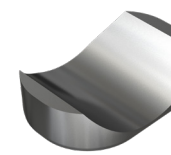


17TR

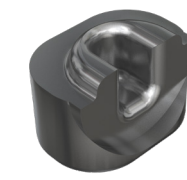
UGM



E70_90_FS



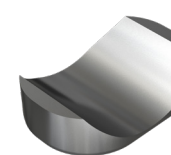
E70_MS



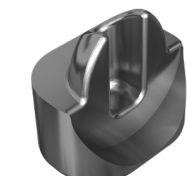
E70_RS



E70_90_FS



E70_MS



E90_RS



833.367.9296

HUNTINGPLC.COM

