

Ezi-Shear Seal HD (ESSV HD)

Pressure Control Equipment

Features

- Cuts standard and high grade Coiled Tubing
- Cuts Slick Line, Braided Line and Mono/Hepta E-Line
- Independent shear and seal faces
- Dual hydraulic actuator
- Highly resistant to wear

Benefits

- Improved safety and reliability
- Compact design gives improved wellhead access
- Reduced leak paths and redress frequency

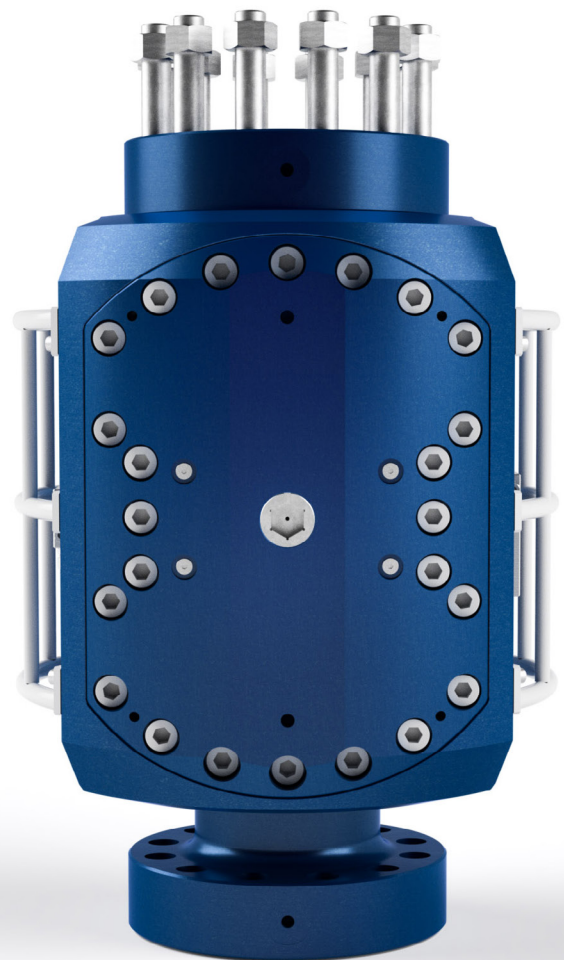
Introducing the Ezi-Shear Seal HD (ESSV HD), a shear and seal valve which delivers improved operational safety, reliability and well integrity during coiled tubing operations.

Hunting's ESSV-HD, Ezi-Shear Seal Valve continues to lead the industry with the new generation for Well Intervention shear seal solutions.

The ESSV-HD offers enhanced capabilities for cutting larger, thicker and higher grade Coiled Tubing and providing well pressure control following the cut.

Technical Specification:

Pressure Rating	15ksi
Bore Size	5-1/8"
Temperature Range	14F to 221F/-10C to 105C
Actuator Pressure	3ksi
Standards	API 16A, NORSOK D-001, D-002, D-010



1 Ezi-Shear Seal HD