

Hunting AutoLock

Pressure Control Equipment

Features

- Automatically prevents valve from opening if pressure is not equalised
- Ability to retrofit to existing equipment

Benefits

- Protects valve from damage from pressure differentials
- Reduces potential for downtime and unplanned repair costs
- Protects against operator error

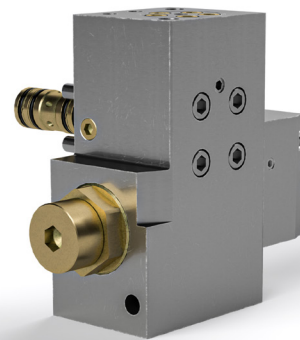
Opening a valve under differential pressure should always be avoided as it can cause significant damage to the equipment, cost in equipment, downtime and repairs and potential NPT penalties.

The Hunting AutoLock provides a safeguard against valve damage by automatically locking the hydraulic supply to the actuators when differential pressure is detected across the flapper when opening the valve.

This prevents the valve from opening and causing damage to internal components, therefore preventing expensive repair costs and downtime.

The AutoLock only prevents the valve from opening and does not impede closing times or cutting capability.

The AutoLock can be retrofitted to existing ESSV assemblies and is adaptable for use on other valves for protection of all your equipment.



1 Hunting Auto Lock



2 Hunting Auto Lock attached to an Ezi-Shear Seal Valve